

TERMINALS

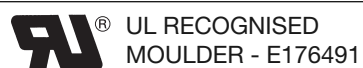


MILES · PLATTS

- All terminals & wire are now converted to lead free
- TBS 900 series to suit A and S ranges
- TBS 600 series to suit M range
- Solderability test to BS 2011 1981
- Round, square and serrated wire available
- Retention tests performed to assure connection integrity



Miles-Platts are technical moulders - we manufacture more than bobbins - please contact sales for details

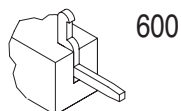


Section 9

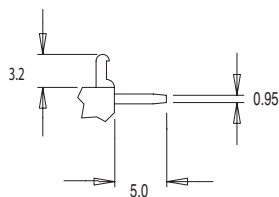
1



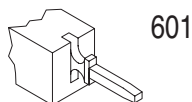
TBS 600 Range Terminals (P.C.B. Type)



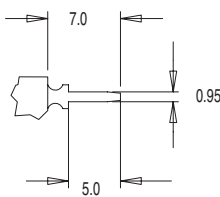
600



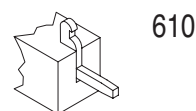
Matl. 0.6



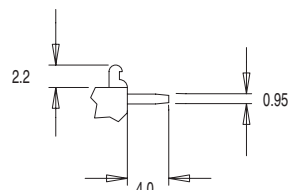
601



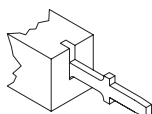
Matl. 0.6



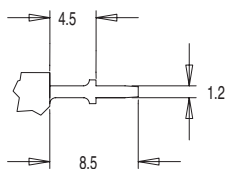
610



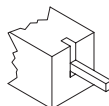
Matl. 0.5



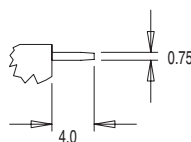
611



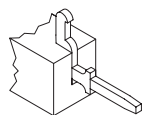
Matl. 0.6



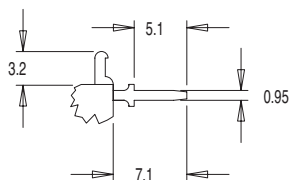
621



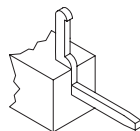
Matl. 0.5



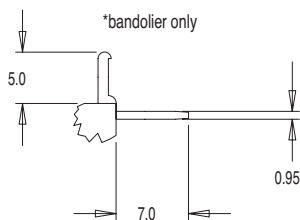
630



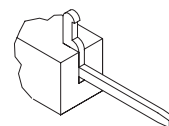
Matl. 0.6



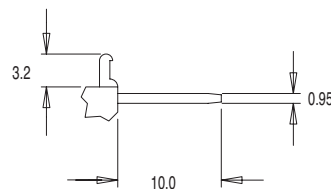
640



Matl. 0.6



650



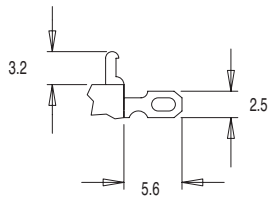
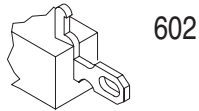
Matl. 0.6

Standard materials: CZ108 (CuZn37) half hard brass with 100% matt tin finish Solderability test to BS2011: 1981
Dimensions in millimetres All terminals are lead-free

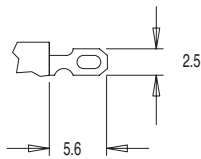
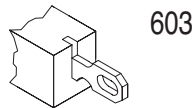


Terminals

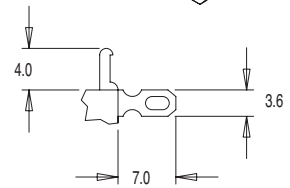
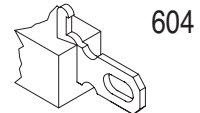
TBS 600 Range Terminals (Solder/Fast-on Type)



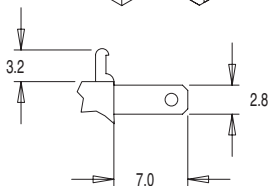
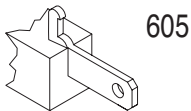
Matl. 0.6



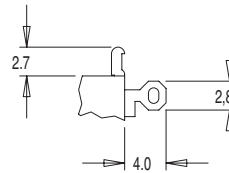
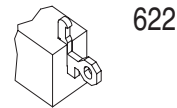
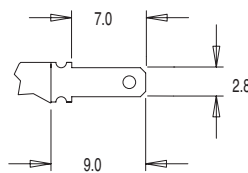
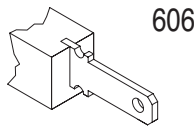
Matl. 0.6



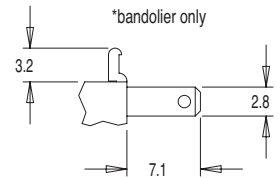
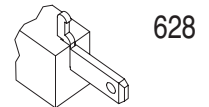
Matl. 0.6



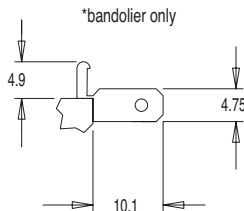
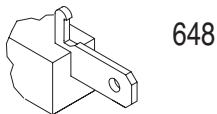
Matl. 0.5



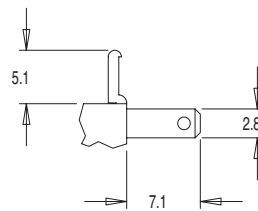
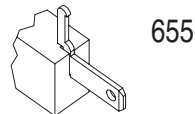
Matl. 0.6



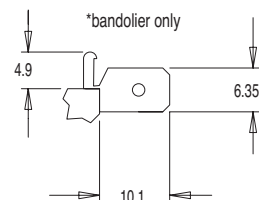
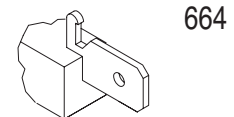
Matl. 0.8



Matl. 0.8



Matl. 0.5

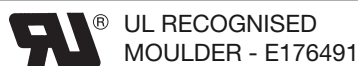


Matl. 0.8

Special blind pocket required to accommodate this terminal. Details available on request.

Standard materials: CZ108 (CuZn37) half hard brass with 100% matt tin finish Solderability test to BS2011: 1981
Dimensions in millimetres All terminals are lead-free

Most products are available direct from stock with same day despatch - please contact sales for details





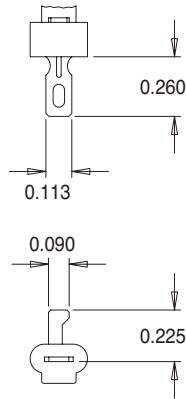
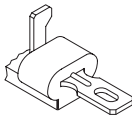
Terminals

For 'S' or 'A' Range Bobbins

TBS 900 Range (Standard Terminal Pocket)

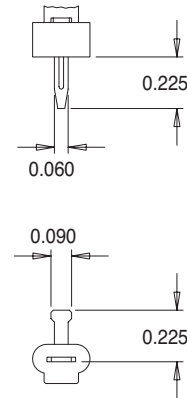
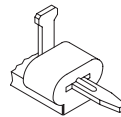
TBS 902

Matl 0.020



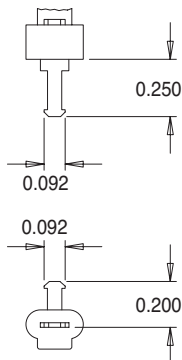
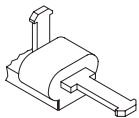
TBS 903

Matl 0.020



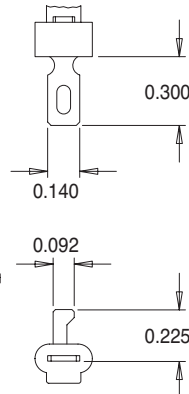
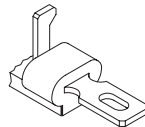
TBS 906

Matl 0.024



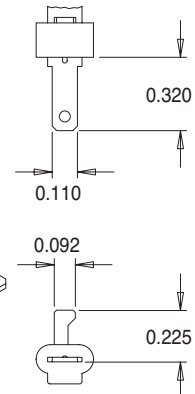
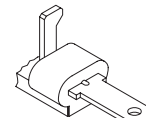
TBS 908

Matl 0.024



TBS 909

Matl 0.020

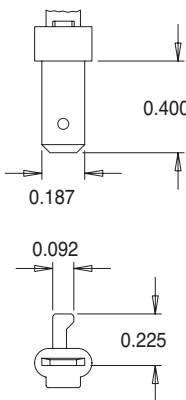
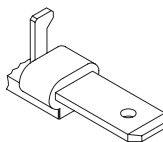


TBS 918

*bandolier only
Matl 0.032

TBS 931

Matl 0.020

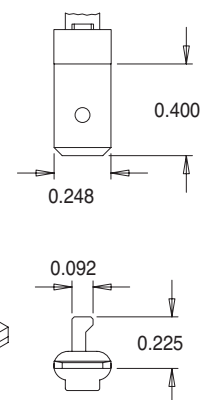
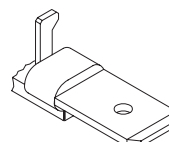


TBS 924

Matl 0.032

TBS 930

Matl 0.020



Standard materials: CZ108 (CuZn37) half hard brass with 100% matt tin finish Solderability test to BS2011: 1981
Dimensions in inches All terminals are lead-free

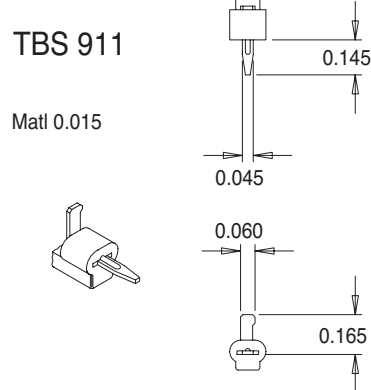
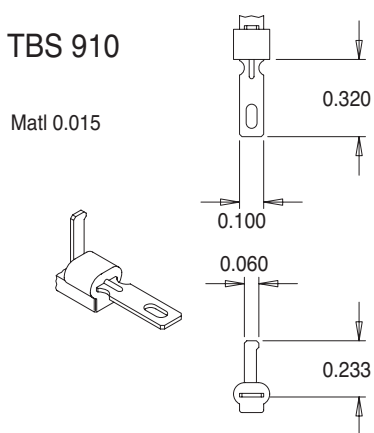
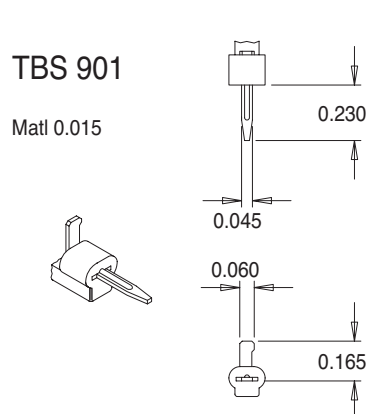
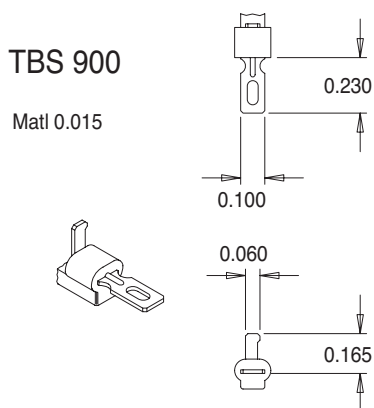


Terminals

For 'S' or 'A' Range Bobbins

TBS 900 Range

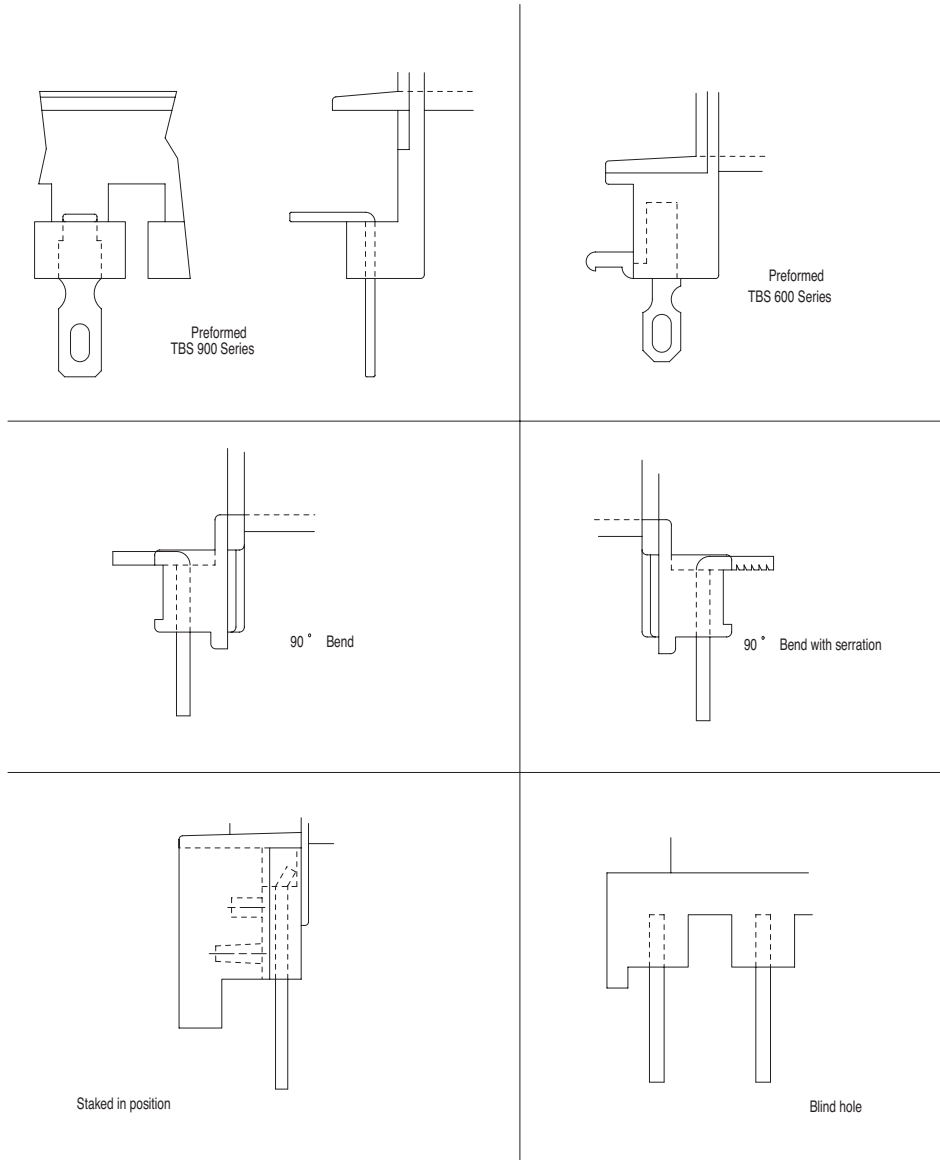
Small Terminal Pocket for 18 (US EI-560), 145 (US EI-625) & 74 (US EI-68) Bobbin Sizes



Standard materials: CZ108 (CuZn37) half hard brass with 100% matt tin finish Solderability test to BS2011: 1981
Dimensions in inches All terminals are lead-free



Pin Insertion Methods



Glossary of Terms - The following is a selected list of industry related terms associated with solderability.

- Activator** A compound added to flux to increase flux efficacy.
- Cold Joint** A commonly used term that refers to a poor quality solder joint.
- Dewetting** Retreat of solder from all or part of joint surfaces, which were initially wetted, leaving an insufficient layer of solder.
- Dip Soldering** The method of soldering adopted by Miles-Platts in which the material to be soldered is fluxed, then dipped into a bath of molten solder.
- Dross** Oxidised solder that forms as a residue in solder baths.
- Efficacy** Term used to describe the level of fluxing activity exhibited by a particular flux.
- Flux** Material used to improve the flow properties of molten solder and the wetting of metallic substrates.
- Liquidus** The temperature at which an alloy becomes fully liquid.
- Solderability** The term used to measure the ease with which a material may be soldered with a particular combination of solder and flux.
- Tinning** A pre-coating of a metallic surface with molten solder to protect from oxidation and preserve solderability.
- Wetting** Spreading of a coating of molten solder on a metallic substrate and production of an intermetallic compound.